



Boston After School
& Beyond

Aligning Public/Private Systems

89 South Street

Suite 402

Boston, MA 02111

617.345.5322

www.bostonbeyond.org

Connect resources.
Share knowledge.
Enrich youth.



Presentation Overview

- ✓ Boston Beyond's Strategic Framework
- ✓ Public/Private Partnership Model
- ✓ Initiatives Overview
 - ✓ Planning Teams
 - ✓ Focus on public/private sustainability strategy
- ✓ Your goals for this presentation?

Our Aspiration

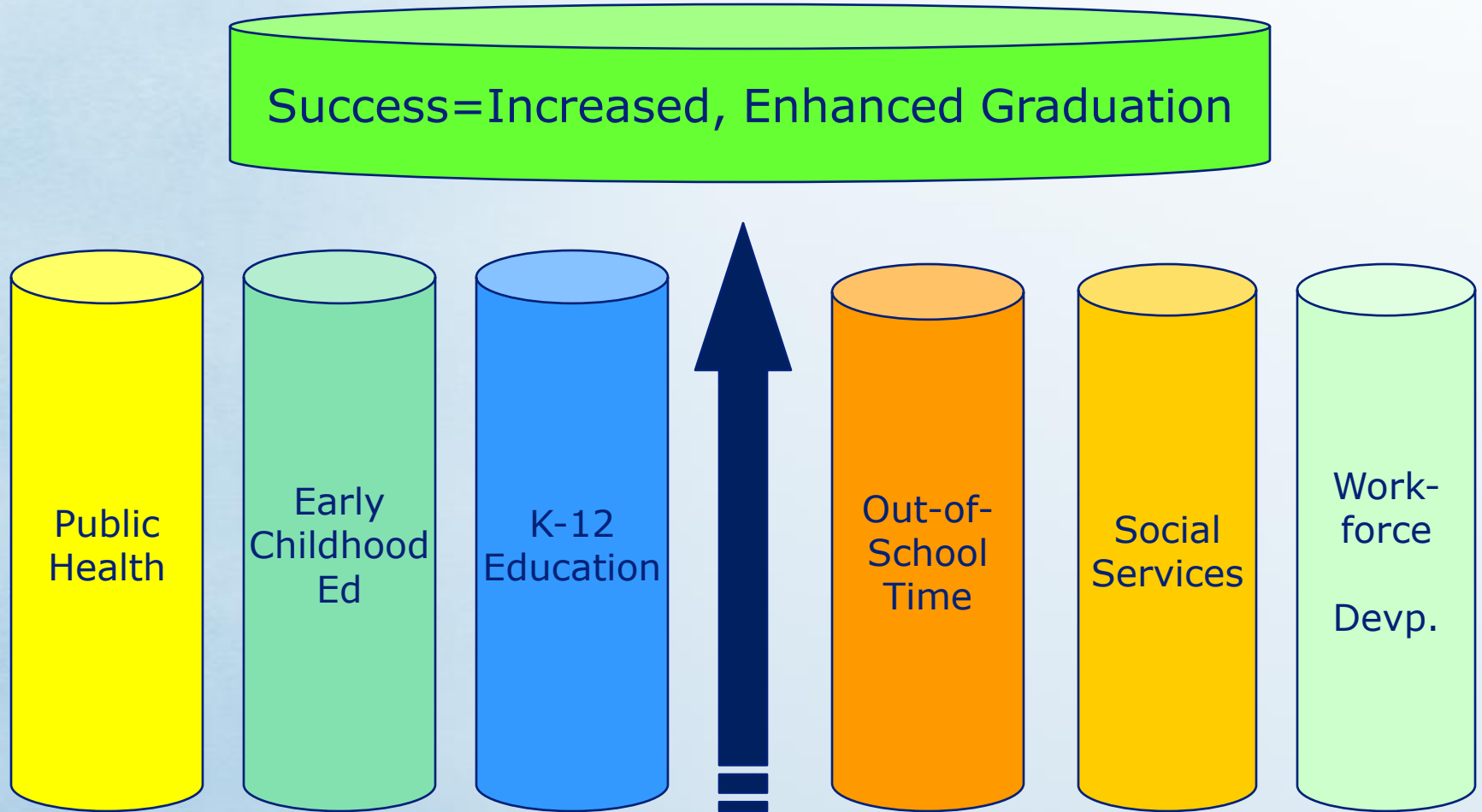
Boston After School & Beyond seeks to catalyze a partnership of the City of Boston, the local philanthropic community, and the city's business and civic leadership to design and implement a successful youth strategy for the children of Boston.

A Successful Youth Strategy

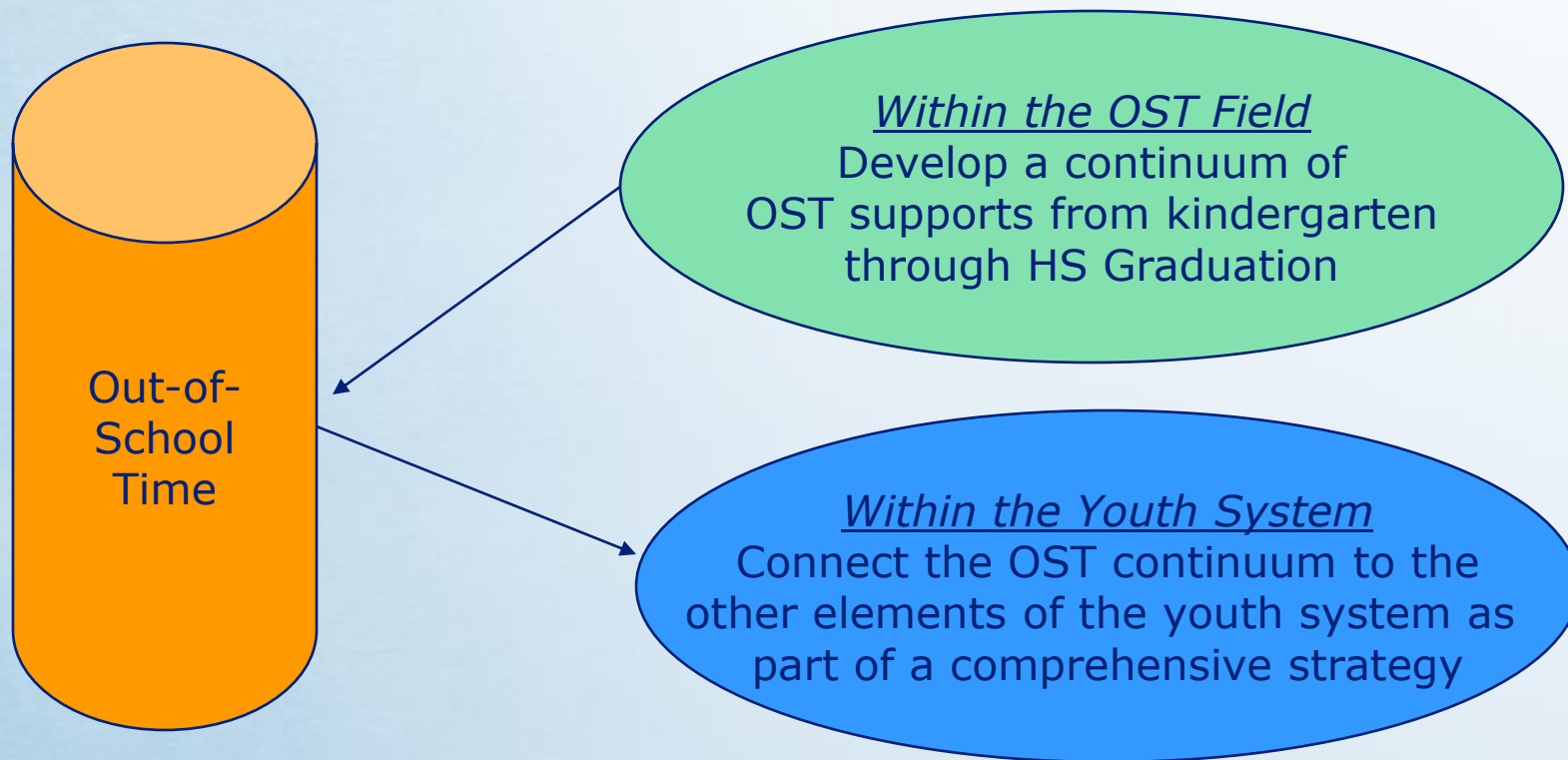
Increases the number of Boston's young people graduating...

- ✓ From high school—the floor of our aspirations for them.
- ✓ Into society, with a set of tools that enable them to live fulfilling and productive lives (often called 21st Century skills)

Youth Strategy Elements



Our System Building Role

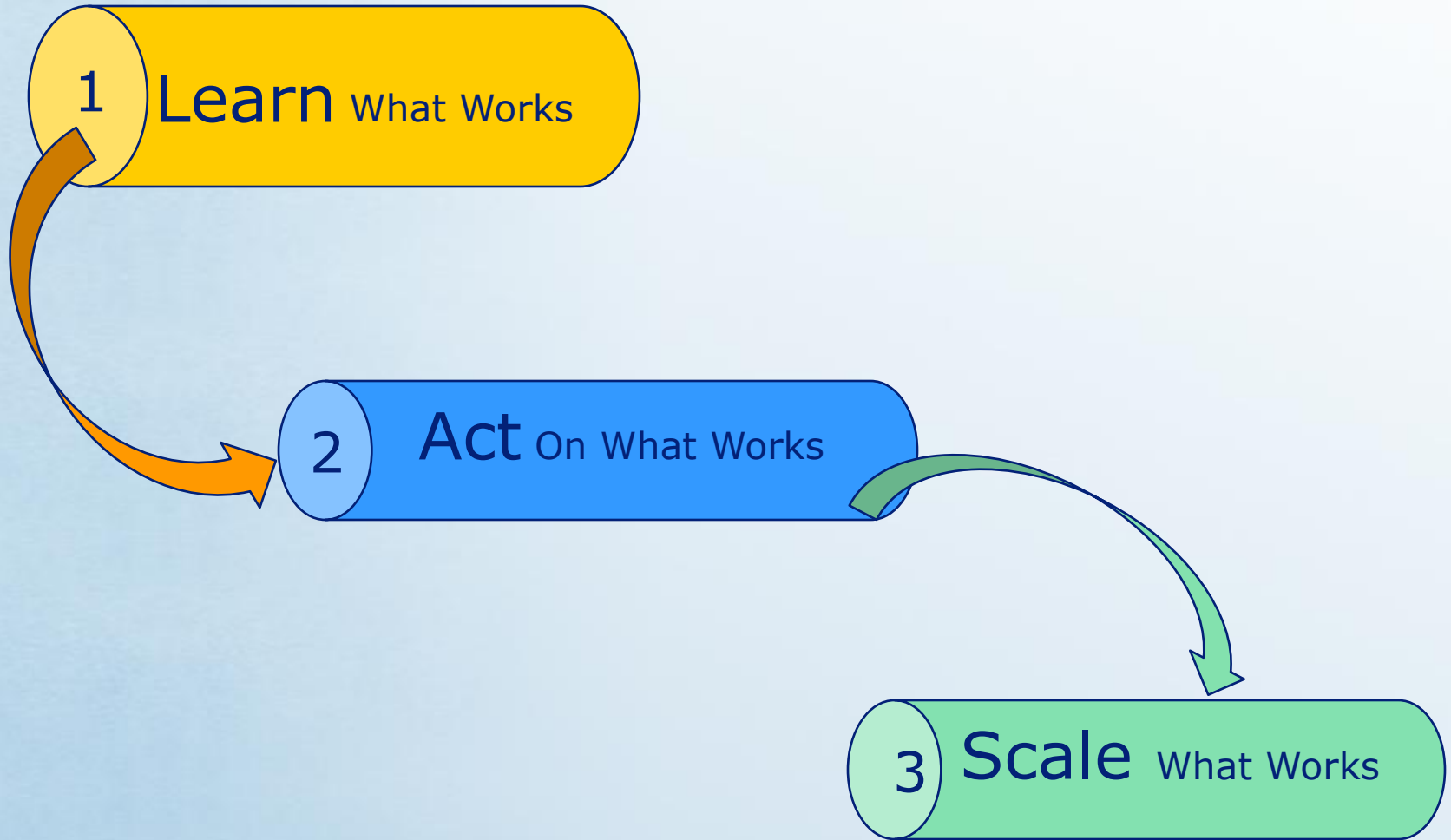


Underlying Beliefs:

Deploy OST to address specific needs of youth

Connect OST to broader system in order to achieve outcomes

3 Components of Our Strategy



Board of Directors

Mayor Thomas M. Menino

Honorary Chair

- Marjorie Bakken, Past President, Wheelock College
- Roger Brown, President, Berklee College of Music
- Lou Casagrande, President, Children's Museum
- Jennifer Davis, President, Massachusetts 2020
- Marion Kane, President, Barr Foundation
- Ted Kelly, CEO, Liberty Mutual
- Larry Mayes*, Chief of Human Services, City of Boston
- Claudio Martinez, Executive Director, Hyde Square Task Force

Chris Gabrieli, Chair of the Board

Chair, Massachusetts 2020

- Edward F. Davis, III*, Police Commissioner
- Michael Contompasis*, Superintendent of Schools
- Kathy Plazak, Plazak Associates
- Ned Rimer, Co-Founder, Citizen Schools
- Linda Whitlock, CEO, Boys & Girls Clubs of Boston

* *Ex officio* member

Key Activities & Impacts

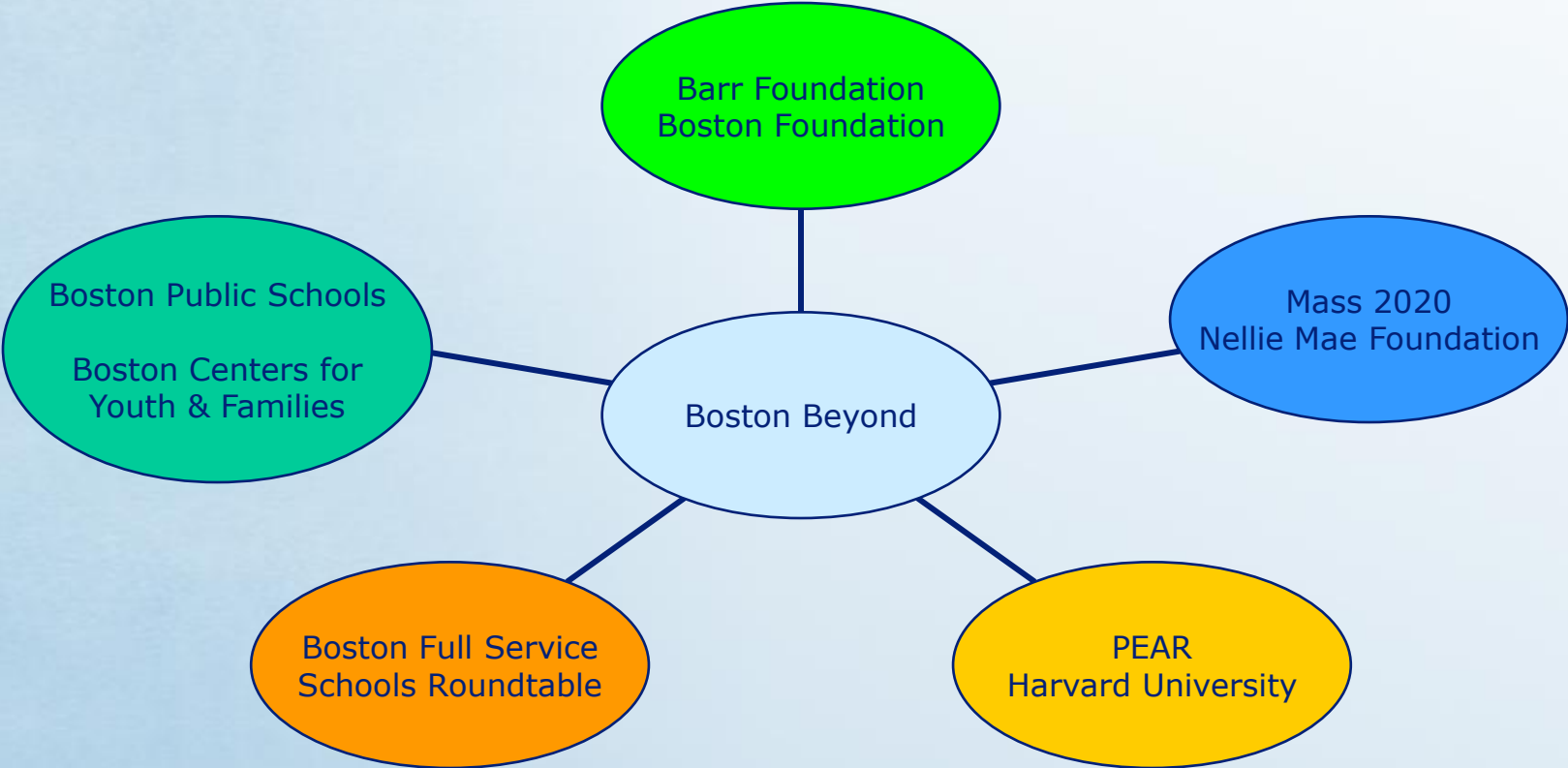


- ✓ ACHIEVE Boston
- ✓ Arts & Culture Initiative
- ✓ OST Navigator
- ✓ Partners for Student Success
- ✓ Teen Initiative
- ✓ Youth Sports Initiative

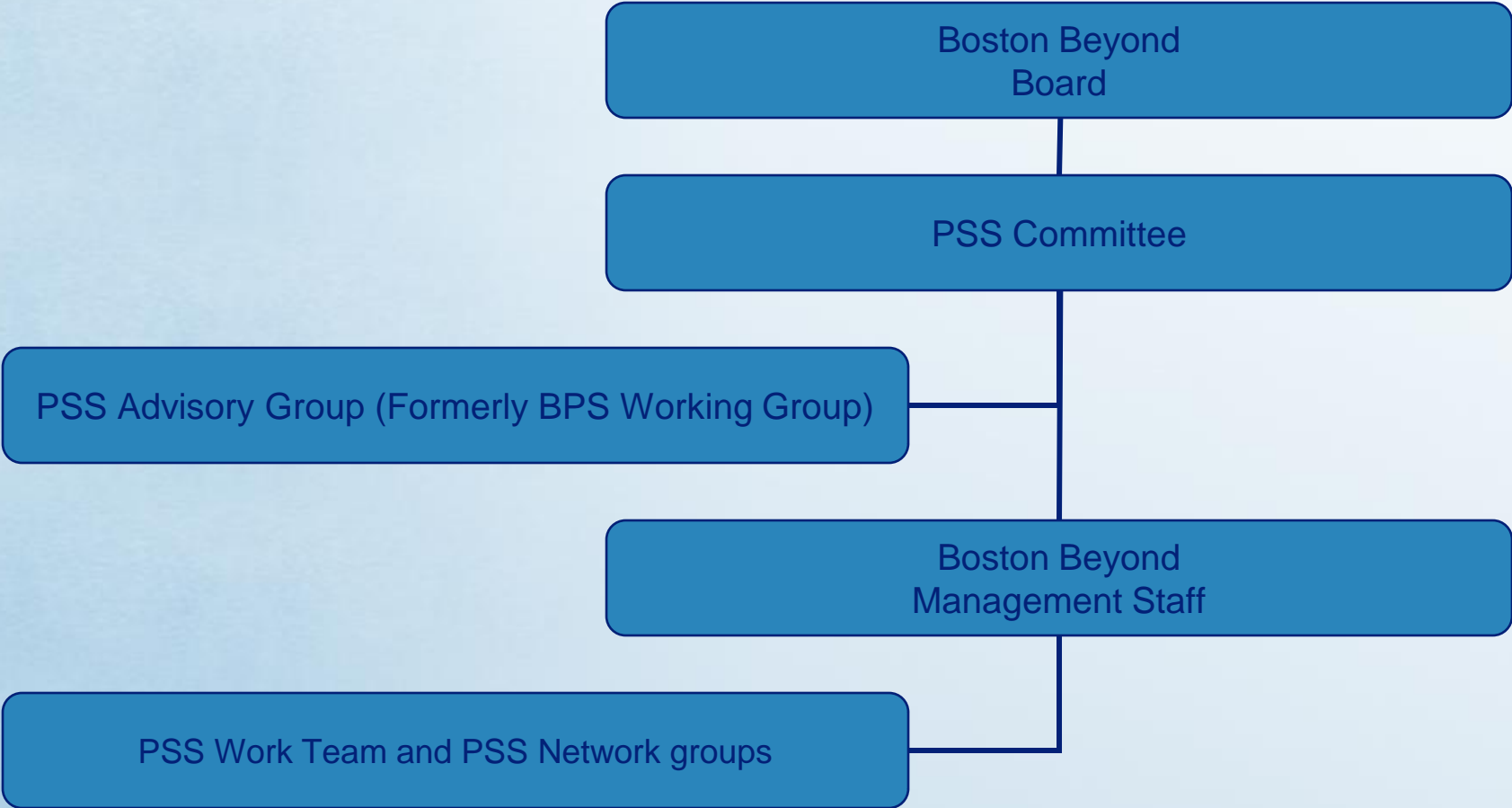
Partners for Student Success (PSS)

- ✓ Six-year effort to effectively align OST and social services with the needs of struggling students in 15 of the most challenged elementary schools in Boston.
- ✓ \$1.6M over three years to expand OST programming at school and neighborhood sites.
- ✓ \$2.6M over three years to expand BPS staff in order to develop and manage community partnerships
- ✓ \$2.6M over three years to community organizations to train staff and develop curriculum tied to student needs.
- ✓ **Direct Impact On Children: 4,287 students in 10 schools (5 to be added in 2008)**

PSS Planning Team Model



PSS Governance Model



PSS Groups Description – at a glance

- PSS Committee:
 - Purpose: PSS Initiative strategic direction and sustainability (Finance study)
 - Participants: Board members and non-board members, by invitation
 - Schedule: as needed - possibly meets every other month
 - Staffing: VP for Program Strategy
- PSS Advisory Group
 - Purpose: review progress and provide advice on key topics of the initiative
 - Participants: Broad-based representation from stakeholders in city government, schools, philanthropy, and NP sector
 - Schedule: three times a year (mid-October, late January, early May)
 - Staffing: PSS Director

Other PSS working groups

- MELs Network

- Purpose: working sessions on PSS design and implementation
- Participants: MELs, Deltas
- Schedule: every month
- Boston Beyond representative: PSS Director

Principals Network

- Purpose: updates and working sessions on PSS implementation
- Participants: PSS principals (MELs invited??? – Kevin to determine)
- Schedule: every other month (Kevin to determine during school or after school??)
- Boston Beyond representative: PSS Director

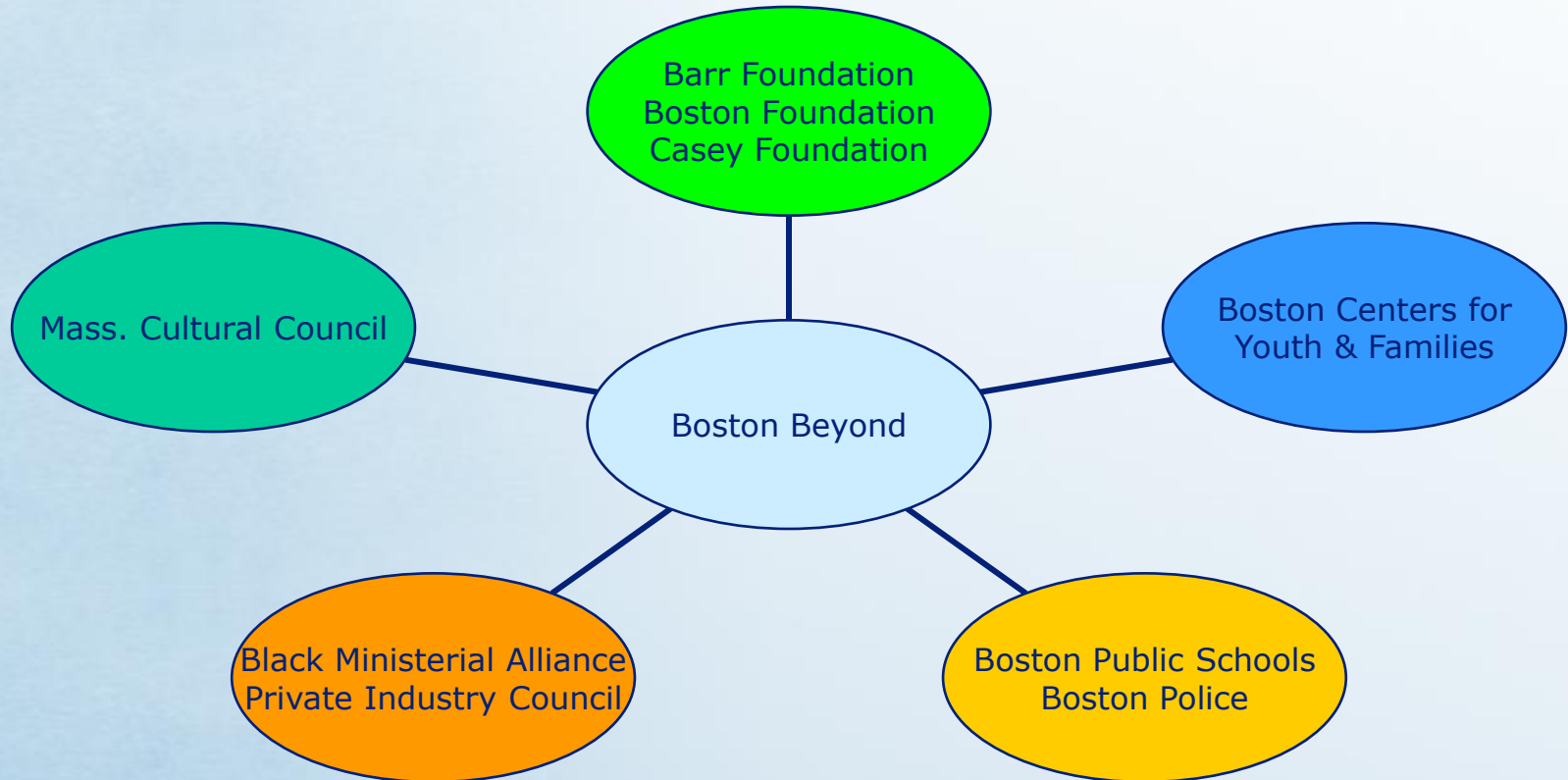
PSS Work Team

- Purpose: working meetings
- Participants: BB's PSS director and Vice Pres of Programs, DELTAS, FSSR, BPS Director of Extended Learning Services
- Schedule: every week
- Boston Beyond representative: PSS Director

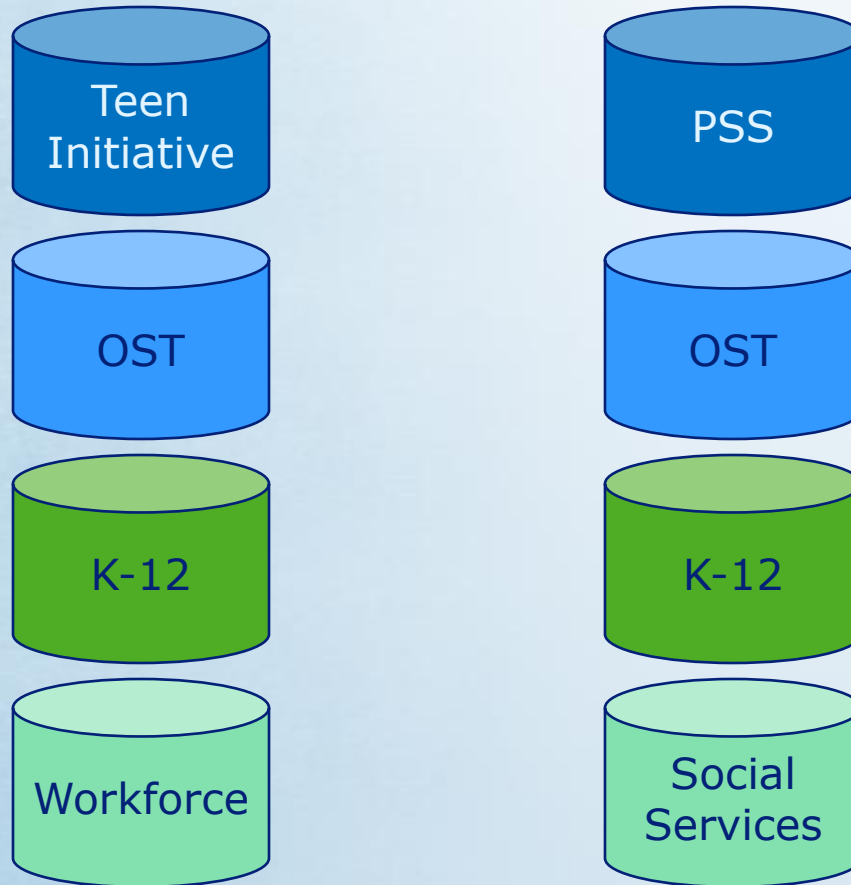
Teen Initiative

- ✓ Diverse partnership (including High School Renewal Team and Private Industry Council) designed to identify and fund OST programs that effectively address the dropout crisis in Boston.
- ✓ \$150k in grants to community organizations this year to train staff and develop curriculum to effectively serve teens in danger of dropping out of school.
- ✓ **Direct Impact On Youth: 4,435 (Teens at least 1 year over age, grades 8 to 12, in BPS)**

Teen Initiative Planning Team Model



Multi-Systems Model



System Alignment Tools

- ✓ Infrastructure
 - ✓ Manager of Extended Learning Services (PSS)
 - ✓ Network Clusters (Teen Initiative)
- ✓ Funding
 - ✓ Staffing, programming, and capacity building \$
- ✓ Culture
 - ✓ Joint training
 - ✓ Integrated staffing
 - ✓ Time

Exit Strategy Questions

- What is the stopping point?
 - Scale
 - Replication
 - Spin-off
- Sustainable Funding
 - Public Sector fantasies
 - Private Philanthropy fantasies